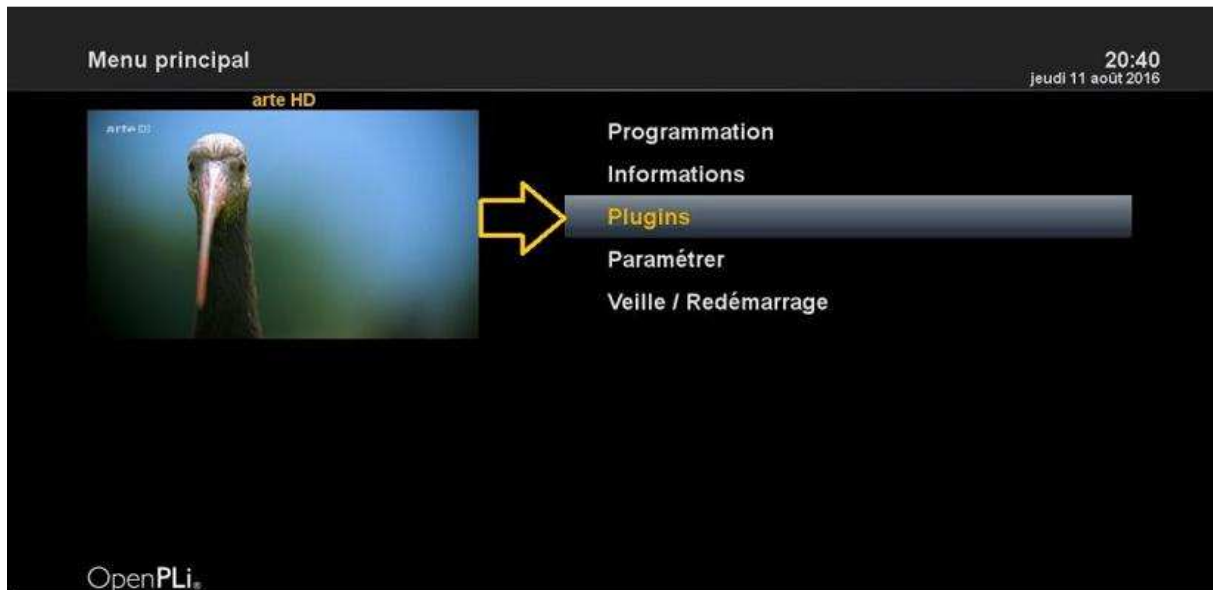
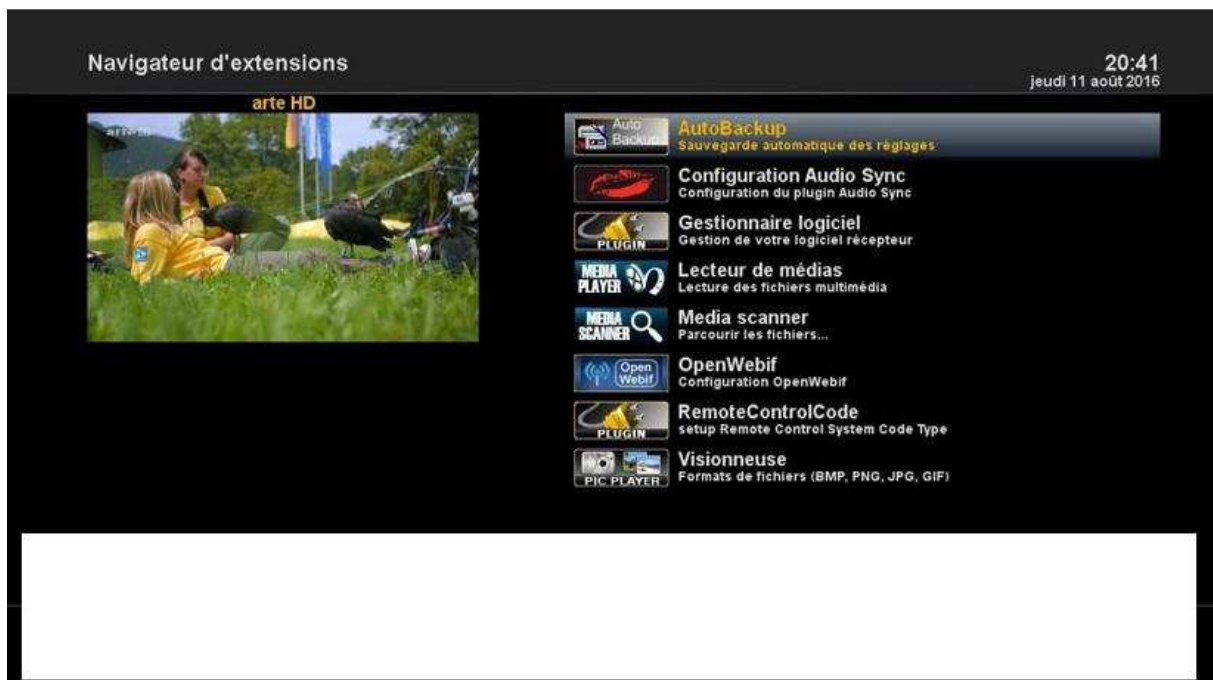


1- OSCAM plugin Installation



Press the **MENU** button then **Plugins**



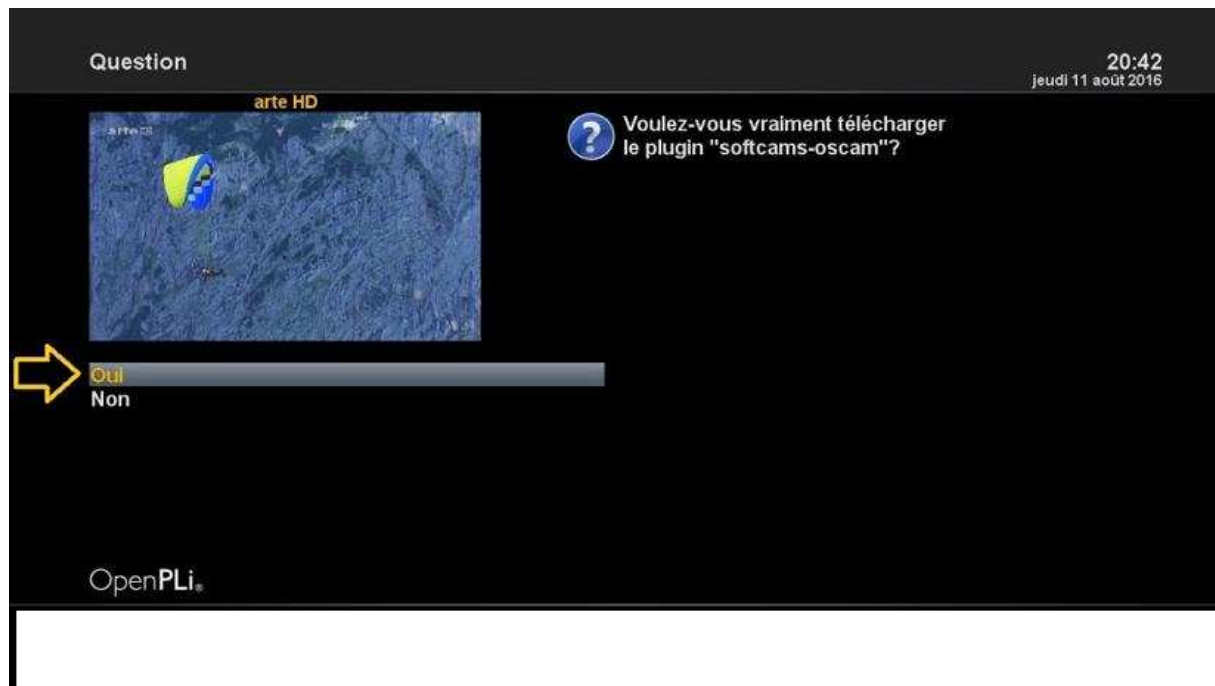
Press **Green** button



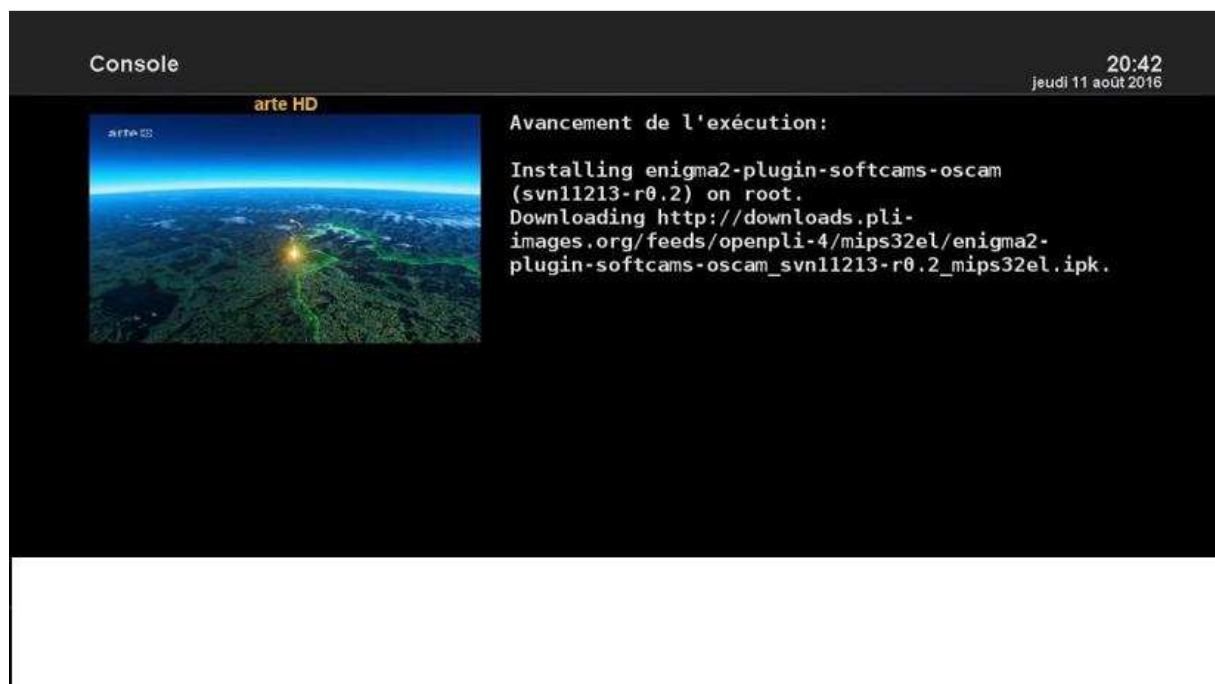
Select **softcams**



Select **oscam** and press on **OK**

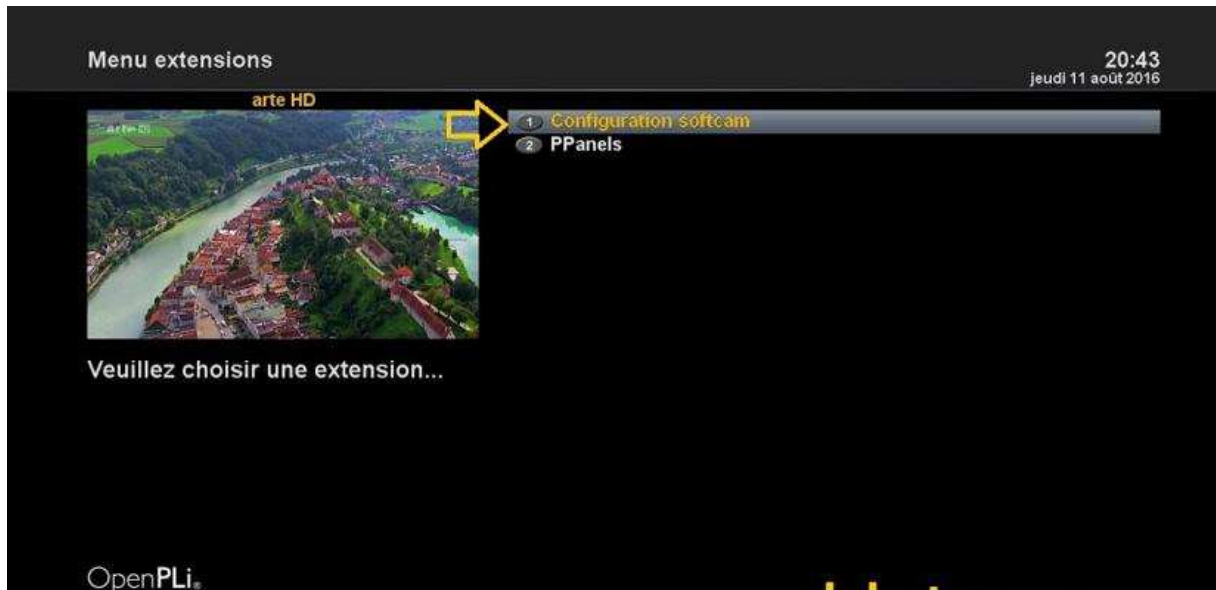


Select **Yes** to confirm the installation



Please wait while installing the plugin

When the installation is finished press **EXIT** to exit



Press the **BLUE** button on the remote control, and select **Softcam Configuration**



Select **OScam** as **CAMD** using the arrows on the left and right of the remote control.

After select **Restart Softcam**

2. Copy of the OScam subscription

– Start **WINSCP** or **DCC** in the home window

File protocol: FTP

Hostname: 192.168.1.102 (IP address of your STB)

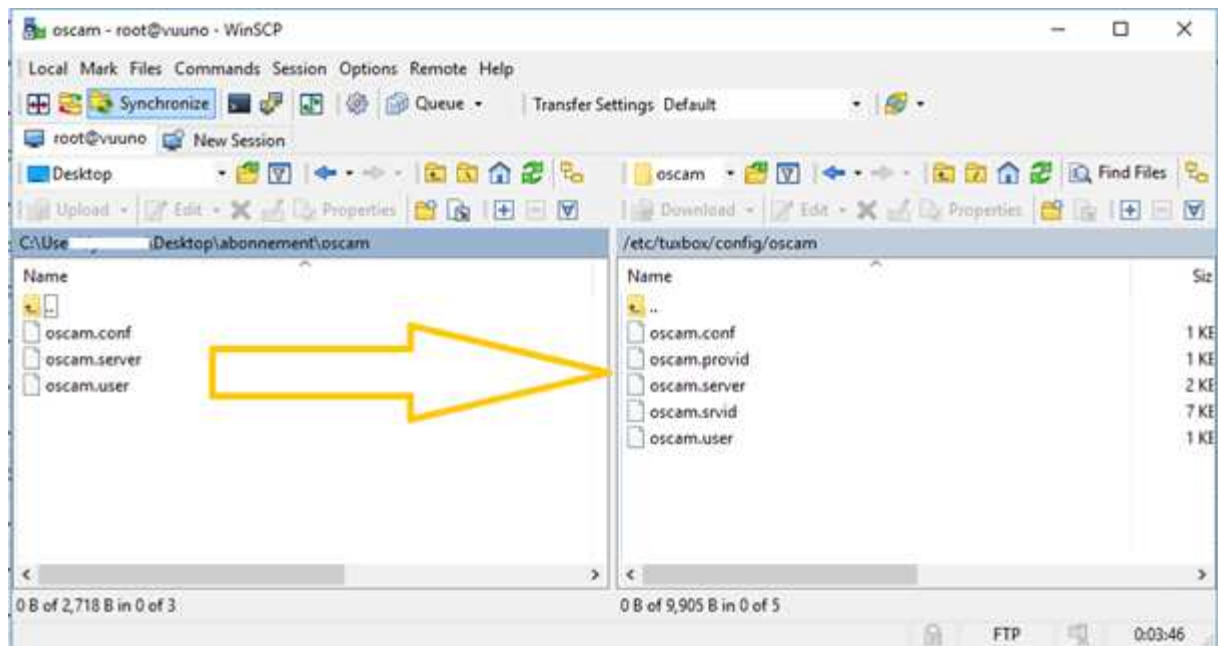
The screenshot shows a 'Login' dialog box with the following fields and options:

- File protocol:** FTP
- Encryption:** No encryption
- Host name:** 192.168.1.102
- Port number:** 21
- User name:** root
- Password:** (empty)
- Anonymous login
- Save** (dropdown)
- Advanced...** (dropdown)
- Tools** (dropdown)
- Manage** (dropdown)
- Login** (button)
- Close** (button)
- Help** (button)

User name: root

Password: root

then click on **Login**



Copy the files of your OSCam subscription to the path **/etc/tuxbox/config/oscam** de votre ET11000 or ET 7000.

oscam.server

oscam.conf

Once the files are copied, restart OSCAM.